

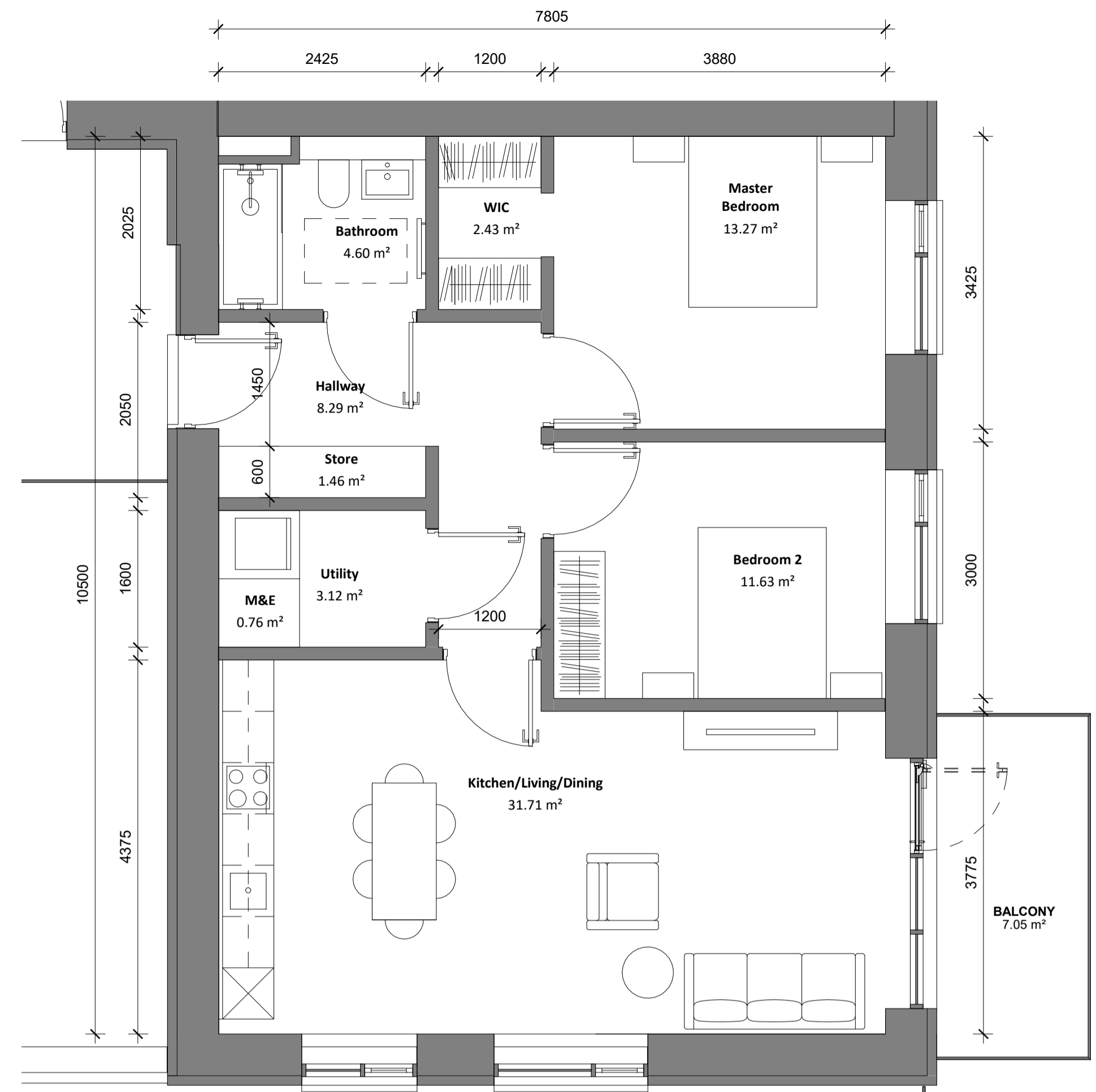
All dimensions to be checked on site. Figured dimensions take preference over scaled dimensions. Any errors or discrepancies to be reported to the Architects. This drawing may not be edited or modified by the recipient.

Copyright and ownership of this drawing is vested in RKD Architects, whose prior written consent is required for its use, reproduction or for publication to any third party. All rights reserved by the law of copyright and by international copyright conventions are reserved to RKD Architects and may be protected by court proceedings for damages and/or injunctions and costs.

RKD Architects' Quality Management Systems are certified to ISO 9001:2015.

Notes:

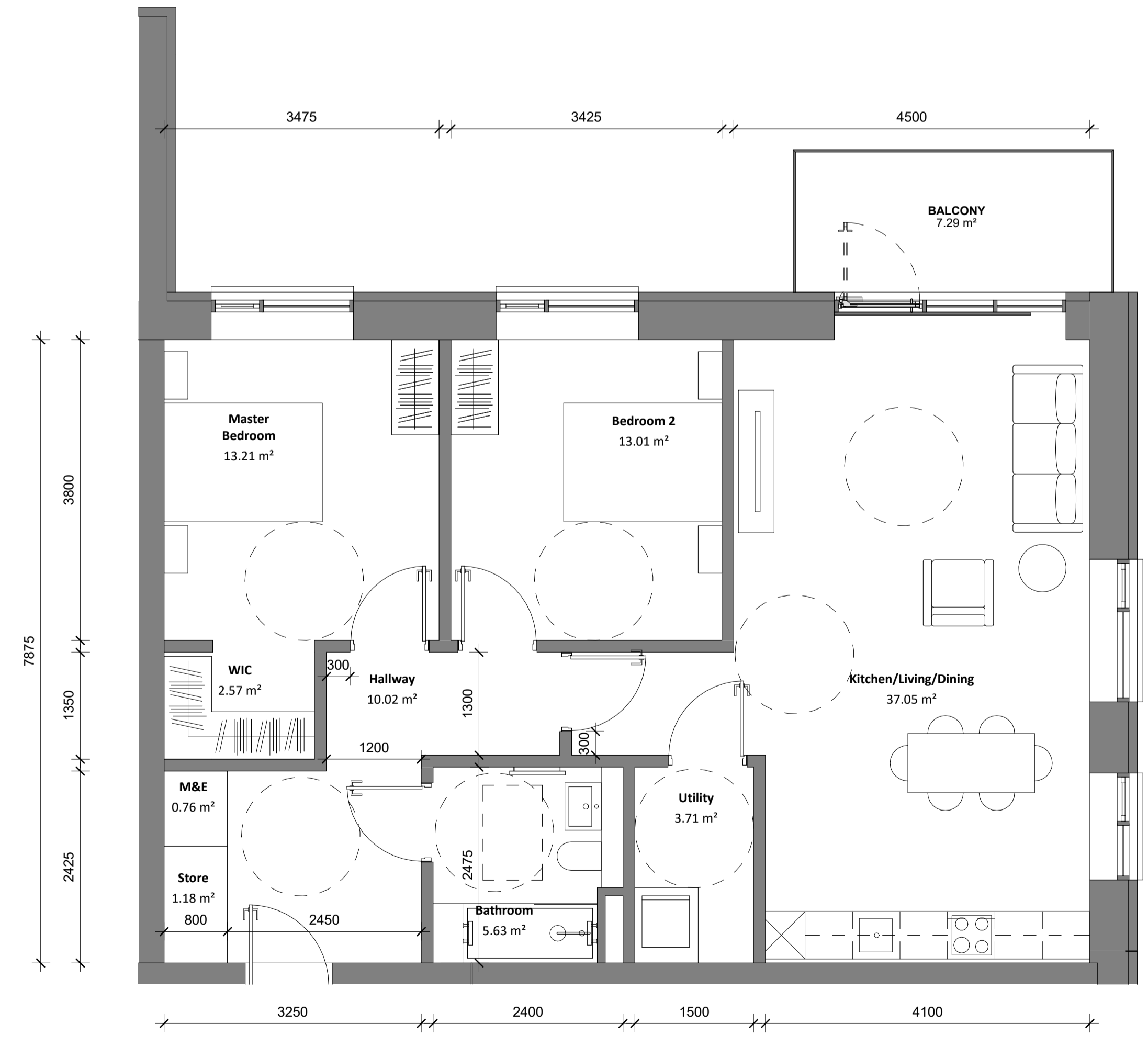
- UNIT TYPE D1**
2 Bed Apartment
- UNIT TYPE D2**
2 Bed Apartment
- UNIT TYPE D3**
2 Bed Apartment
- UNIT TYPE D4**
3 Bed Apartment



Apartment Type - 2B4P_D1		
Name	Minimum Area (NIA m2)	Area Proposed (NIA m2)
Kitchen/Living/Dining	30.00 m ²	31.71 m ²
Master Bedroom	13.00 m ²	13.27 m ²
Bedroom 2	11.40 m ²	11.63 m ²
GIA Floor Area	73.00 m²	82.58 m²
Aggregate Bedroom	24.40 m ²	24.90 m ²
Aggregate Living Kitchen Dining	30.00 m ²	31.71 m ²
Aggregate Storage	6.00 m ²	7.01 m ²
Private Amenity	7.00 m ²	7.05 m ²

1 Apartment Type - 2B4P_D1
1 : 50

Apartment Type - 2B4P_D2		
Name	Minimum Area (NIA m2)	Area Proposed (GIA m2)
Kitchen/Living/Dining	30.00 m ²	37.05 m ²
Master Bedroom	13.00 m ²	13.21 m ²
Bedroom 2	11.40 m ²	13.01 m ²
GIA Floor Area	73.00 m²	92.88 m²
Aggregate Bedroom	24.40 m ²	26.22 m ²
Aggregate Living Kitchen Dining	30.00 m ²	37.05 m ²
Aggregate Storage	6.00 m ²	7.46 m ²
Private Amenity	7.00 m ²	7.08 m ²



2 Apartment Type - 2B4P_D2
1 : 50

Rev.	Date	Description
P1	May 2022	Planning Submission

Beo Properties Ltd

STATUS: PLANNING

PROJECT: Ratoath South SHD

PROJECT ADDRESS: Ratoath South, Co. Meath

DWG TITLE: APARTMENT D1 & D2
DETAIL DESIGN - PLANS

DWG NO: 21088-20188-RKD-ZZ-DR-A-1530

REV.	STATUS	PROJECT NO.
P1	A3	21088
DATE	SCALE	CHK
May 2022	1 : 50	DC

RKD

59 Northumberland Rd
Ballybride, Dublin 4
D04 W9P6, Ireland

+353 1 668 1055
rkd@rkd.ie
rkd.ie